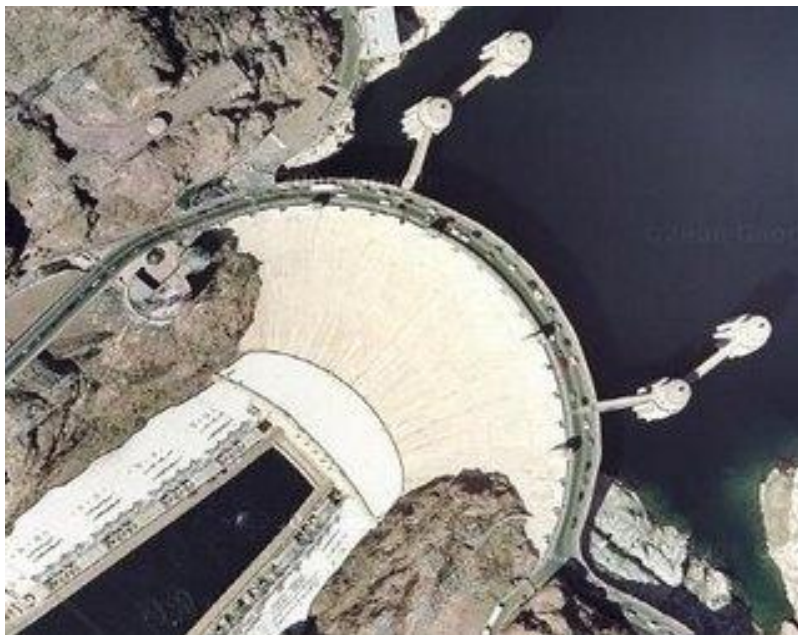


Predicus™

Better Project Understanding, Decisions, and Control



The Power is in the Process

PREDICUS – A TOTAL SYSTEM APPROACH TO RISK

Predicus is a consulting company specifically created to provide clients with a comprehensive risk analysis process to enhance executive-level decision-making for complex, uncertain projects.

Through its proprietary process, developed in partnership with GoldSim Technology Group LLC, clients are provided with a new way to holistically view the risks associated with their significant projects and determine the most likely path for success.

The Predicus approach seeks to identify ALL significant sources of uncertainty for a project, in order for the client to maximize their chances of a successful outcome. After rigorously examining the assumptions and information underlying the project, Predicus creates a single, integrated GoldSim model that simulates all of the relationships and risk sources over the entire project life span. The specific risks and their associated mitigation activities are evaluated in a larger context to assess how they impact overall cost, schedule, and success of the project.

The initial analysis can be quickly and efficiently updated at key project milestones to take advantage of new information and experience as the project evolves.

PREDICUS DELIVERS VALUE

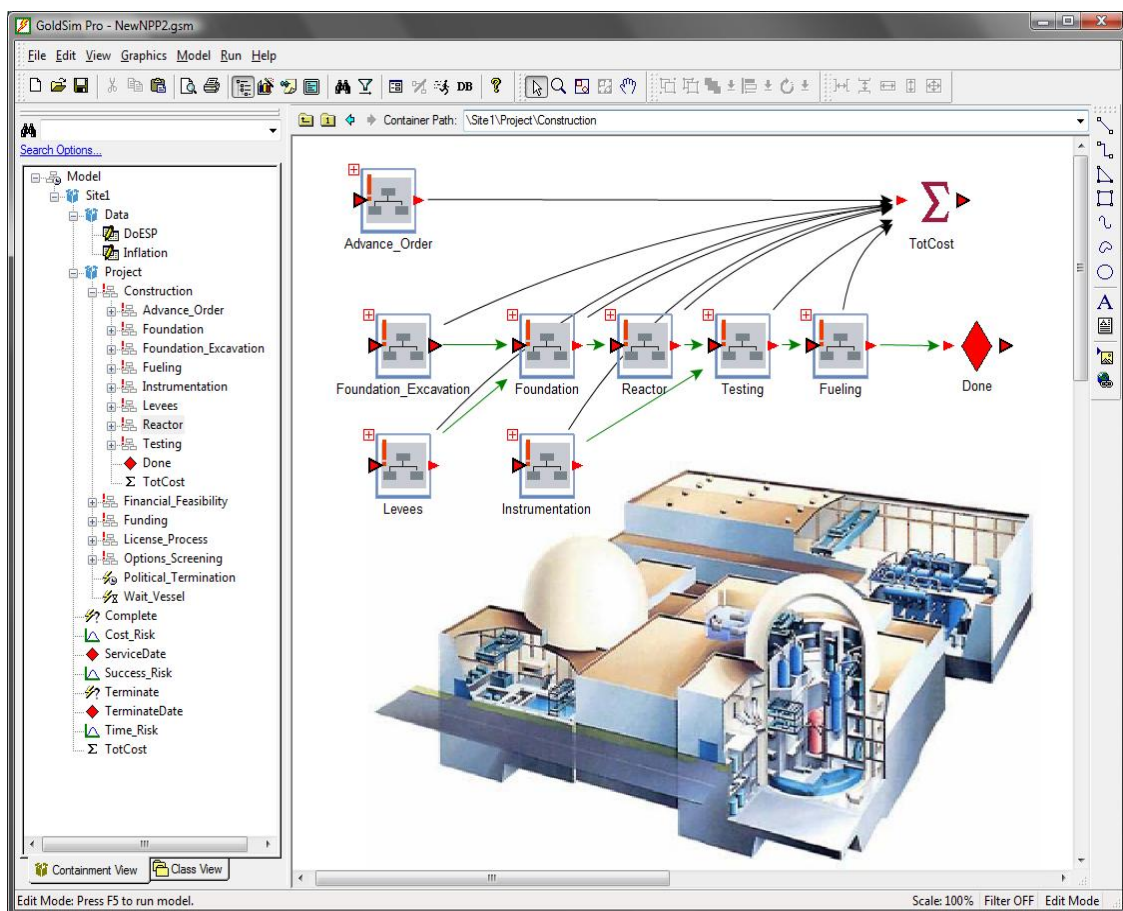
- Accurate, in-depth assessment of project risks by highly qualified industry veterans
- Identification of the best and most cost-effective ways to avoid or minimize the project risks and their consequences
- Identify supply chain risks and the risks associated with the increasingly international nature of most projects where currency fluctuations are variable
- Ability to explain and defend decisions to financial lenders, stakeholders and regulators
- Effective project management through time that monitors the probability of success throughout implementation

GOLDSIM™ – THE SOFTWARE CORE

GoldSim is a well-proven probability-based simulation code that is currently licensed and used globally by government agencies, corporations, industrial processes, and energy producers. More powerful than spreadsheet add-ons, it is a state-of-the-art analysis tool that is constantly evolving with new modules that complement well-developed elicitation processes.

GoldSim is the technology platform upon which the project model is created and the Monte Carlo simulations are run. It is a visual tool that represents processes, data, and outcomes in an especially effective way for interactions with Boards, politicians, regulators, and other stakeholders.

GoldSim's power and flexibility allow Predicus to simulate both 'hard' and 'soft' risks, and to track cost, schedule, and other indicators of the project's progress.

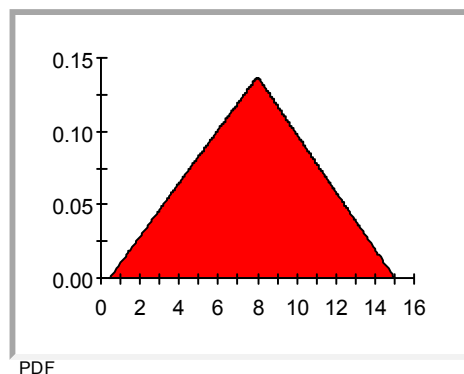


The Look and Feel of GoldSim

A UNIQUE METHODOLOGY

The Predicus team brings a special understanding and demonstrated capabilities to assess the importance and impact of risks associated with dynamic events upon the success of a project or a portfolio of projects. Skills in expert elicitation and probability encoding are vital for identifying meaningful influences upon a project's success and incorporation into the GoldSim model.

The methodology is especially valuable in modeling uncertainty in “soft elements” such as political actions, public acceptance, stakeholder reactions, and the outcomes of regulatory processes. The GoldSim model allows for rapid evaluation of alternative inputs and can be effectively used to engage the client's stakeholders and decision-makers and with regulators about the cost-effectiveness of requests for more data.



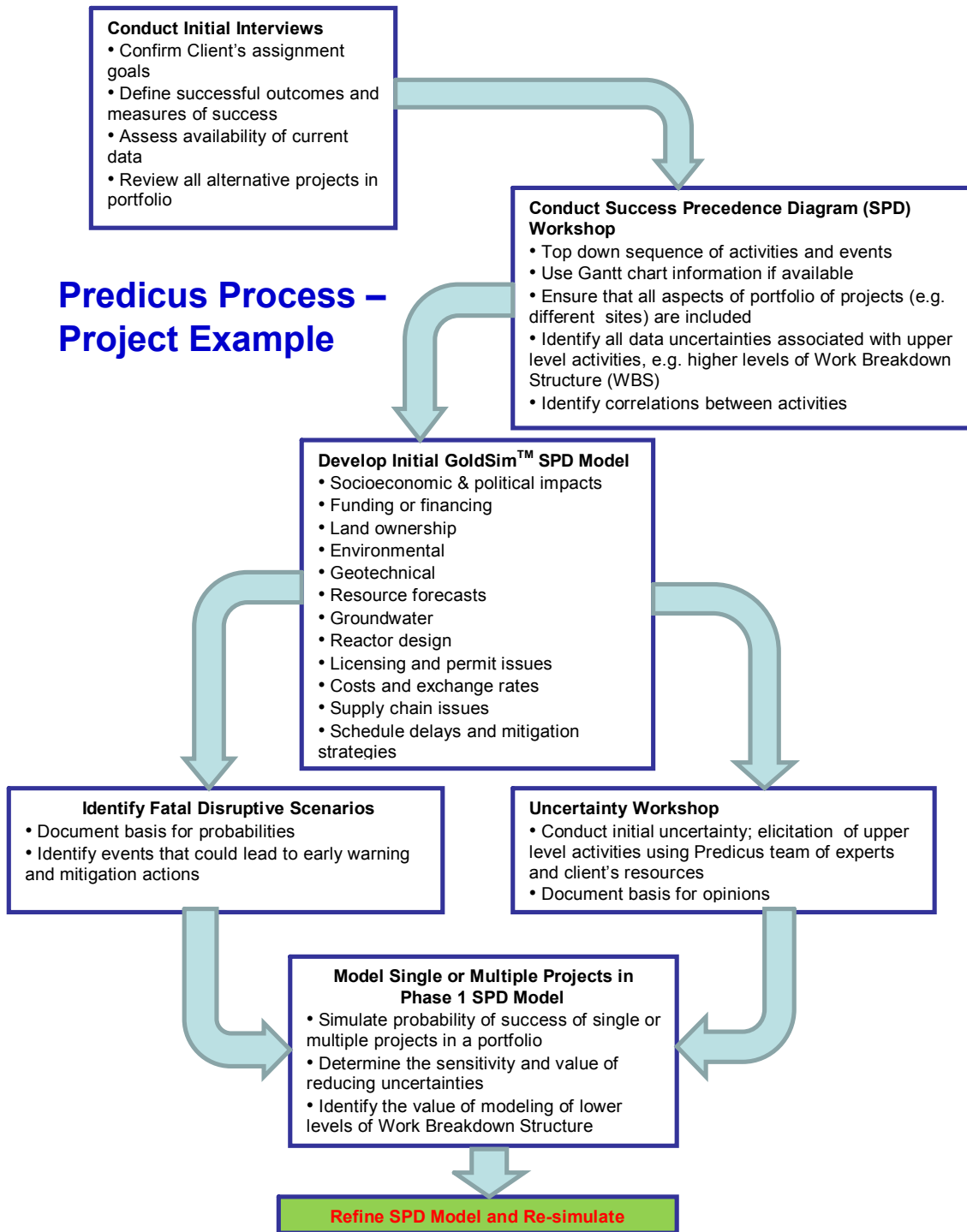
Example of Subjective Probability Distribution

COLLABORATION AND TEAMWORK ARE KEY

The Predicus team's approach is to carry out its work in a way that is fully integrated with the client's own internal group. The role of Predicus and the intent of its team are to augment and validate the work already begun on the client's projects. It brings to bear on the project a group of exceptionally-qualified industry experts with facilitation skills that are coupled with state-of-the-art analytical capabilities in the quantitative risk assessment model.

Working in conjunction with the client's staff combines the strengths of both groups, allowing the work to proceed as fast as possible while ensuring minimal duplication of effort. In the process, the client's team is trained in the use of the Predicus methodology and encouraged to use the GoldSim model in the ongoing management of the project implementation.

THE POWER IS IN THE PROCESS – DELIVERING INSIGHT IN CAREFULLY STRUCTURED STEPS



EXPERIENCED LEADERSHIP

The Predicus team is led by industry veterans bringing decades of experience to each step of the process.

- **David Pentz** is an engineer with more than 40 years of professional experience in the mining, nuclear, civil, and environmental, and petroleum industries. He is an expert on the application of probabilistic risk assessment methodology and has extensive experience in the process of expert elicitation of uncertainties in a probabilistic framework. David is the co-creator of the probabilistic risk assessment concept that became the GoldSim technology.
- **Ralph Stoll** is an engineer with over 38 years of experience in business development, strategic planning, and project management. His business experience includes detailed knowledge of the nuclear fuel cycle including naval nuclear power plant operations. As a venture partner for operations in a private equity investment company he developed procedures and processes to analyze over 150 technologies for initial investments.
- **Ian Miller**, a specialist in systems modeling, is the President of GoldSim Technology Group LLC. His over 30 years of experience includes probabilistic performance assessments of nuclear waste repositories, and risk assessments of Arctic pipelines, uranium mine tailings, hazardous waste landfills, and industrial site contamination. He led the development of the GoldSim simulator, used worldwide for doing probabilistic analyses of complex systems and strategic planning.
- **John Greeves** is a 35 year experienced engineer who provides leadership on risk-informed and performance-based regulatory processes and evaluates regulatory strategy. John supervised and helped develop both regulations and guidance to implement risk-informed, performance-based approaches to siting, design and construction of nuclear facilities. As an NRC staff director, he was responsible for development and promulgation of NRC's first fully risk oriented rule making, 10 CFR Part 63: Disposal of High Level Radioactive Wastes in a Geologic Repository at Yucca Mountain, Nevada.

INTERNET DEMONSTRATION IS AVAILABLE

Contact Predicus to arrange a 45 minute demonstration of the Predicus process for an electricity generation construction project.

CONTACT PREDICUS LLC

Ralph Stoll
President
(O) +1 206 325 5490
(E) rstoll@predicusconsulting.com

David Pentz
Partner
(O) +1 360 730 2214
(E) dpentz@predicusconsulting.com